

Outer Dowsing Offshore Wind

Clarification Note: Borehole Locations Plan

Deadline 3

Date: December 2024

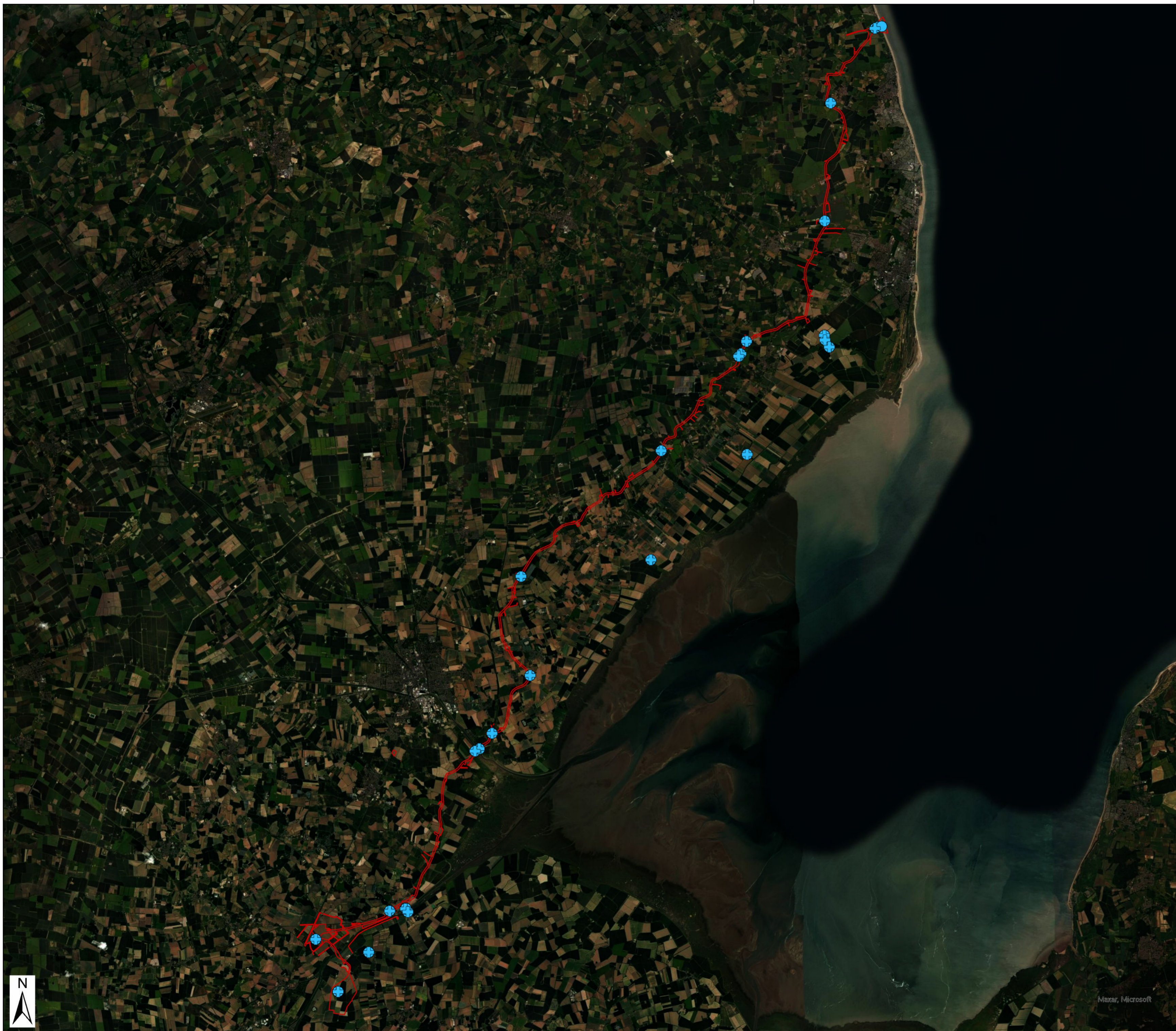
Document Reference: 20.10

Rev: 1.0

Company:		Outer Dowsing Offshore Wind		Asset:		Whole Asset	
Project:		Whole Wind Farm		Sub Project/Package:		Whole Asset	
Document Title or Description:		20.10 Clarification Note: Borehole Locations Plan					
Internal Document Number:		PP1-ODOW-DEV-CS-NOT-0100		3 rd Party Doc No (If applicable):		N/A	
Rev No.	Date	Status / Reason for Issue	Author	Checked by	Reviewed by	Approved by	
1.0	December 2024	Deadline 3	Outer Dowsing	Outer Dowsing	Outer Dowsing	Outer Dowsing	

1 Clarifications regarding Borehole Locations

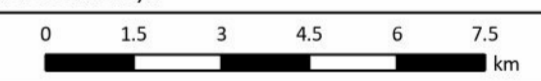
1. This document has been produced in response to Action Point 13 arising from Issue Specific 3 Onshore matters held on the 5th of December 2024, where submission of a plan indicating the locations of the borehole and trial pit surveys that have been undertaken was requested.
2. Three maps are included showing the locations of surveys in 2023 alone, 2024 alone and then a final map showing the combined locations from both years overlaid together.



- 2023 Campaign BH
- + 2023 Campaign TP
- Cable Boundary

Notes:

Onshore Coordinate System
 Datum: OSGB 1936
 Spheroid: Airy 1830
 Projection: British National Grid
 Central Meridian: 2 W
 Vertical Reference: Newlyn



20.10 Clarification Note:
 Borehole Location Plans 2023

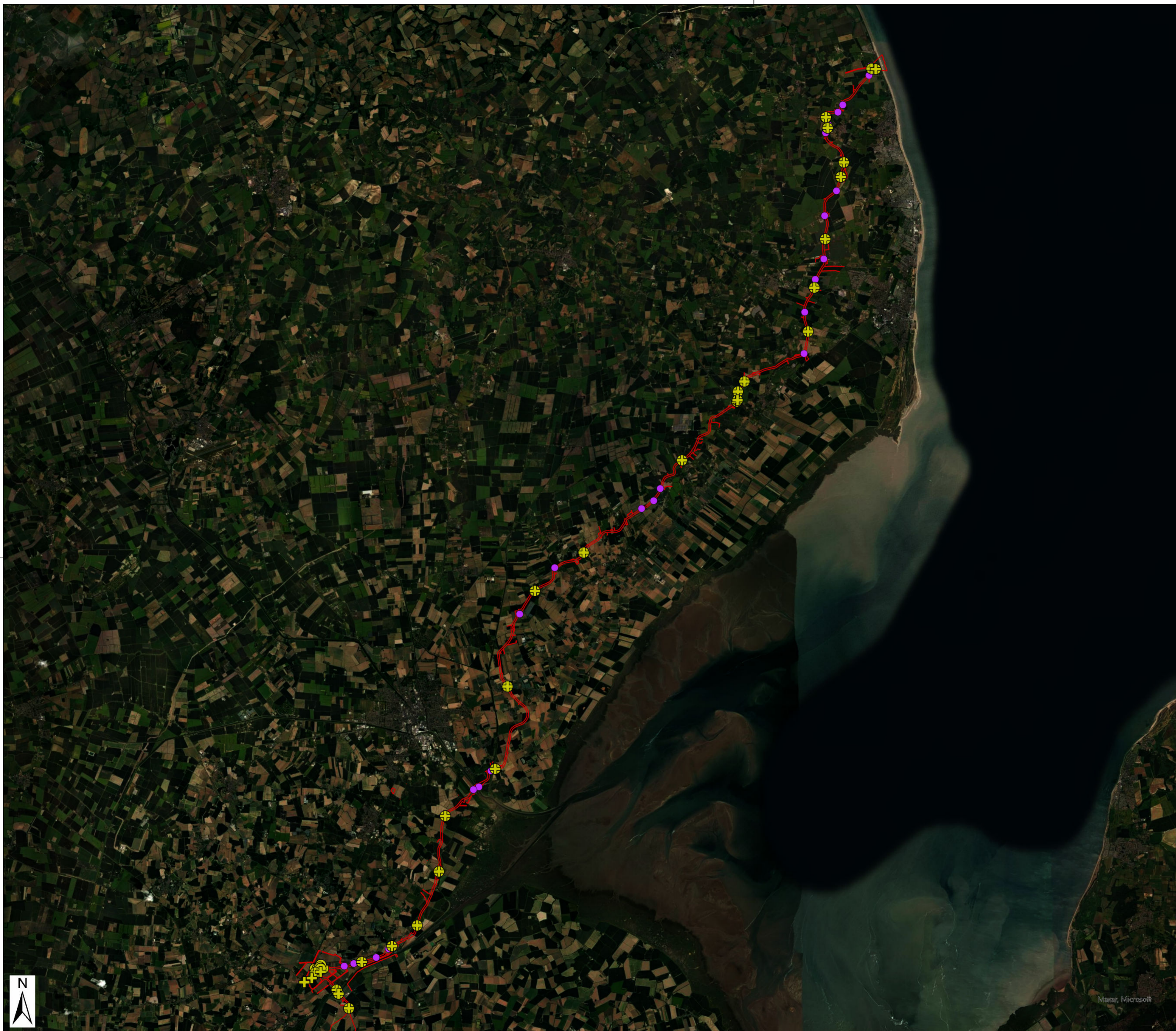
Drawing No: PP1-ODOW-DEV-CS-NOT-0100

Page Size: A2

Drawing 1 of 3			Drawn	Checked	Approved
Rev No:	Date	Description			
1.0	Dec 2024	FOR REFERENCE PURPOSES ONLY	SA		



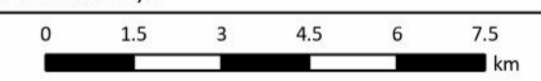
This document may only be used for the purpose for which it was commissioned and in accordance with the terms of engagement for that commission. Unauthorised use of this document in any form whatsoever is prohibited.



- + 2024 Campaign TP
- 2024 Campaign BH
- Archaeological Boreholes 2024
- Cable Boundary

Notes:

Onshore Coordinate System
 Datum: OSGB 1936
 Spheroid: Airy 1830
 Projection: British National Grid
 Central Meridian: 2 W
 Vertical Reference: Newlyn



20.10 Clarification Note:
 2024 Borehole Locations Plan

Drawing No: PP1-ODOW-DEV-CS-NOT-0100

Drawing 2 of 3 Page Size: A2

Rev No:	Date	Description	Drawn	Checked	Approved
1.0	Dec 2024	FOR REFERENCE PURPOSES ONLY	SA		



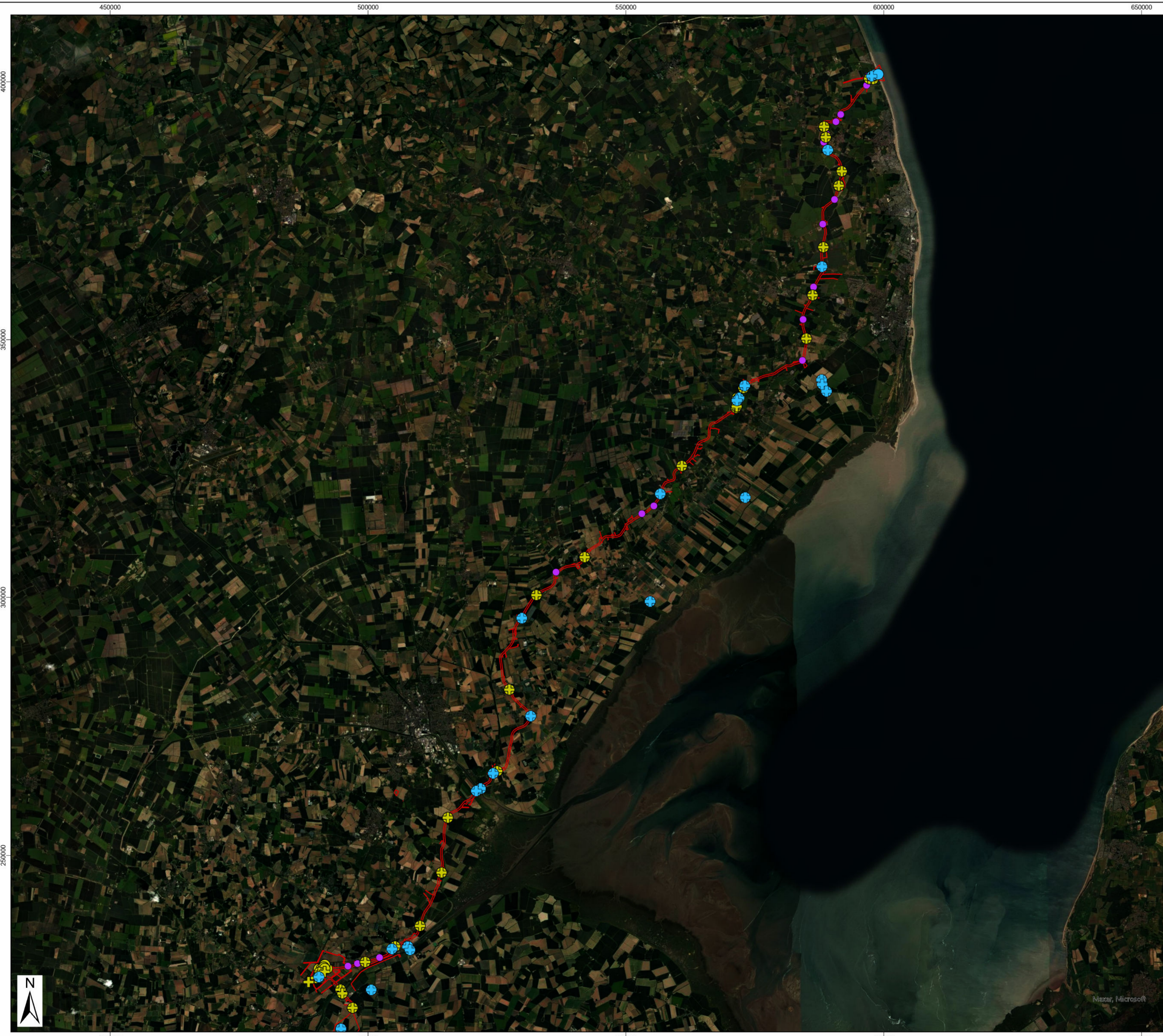
This document may only be used for the purpose for which it was commissioned and in accordance with the terms of engagement for that commission. Unauthorised use of this document in any form whatsoever is prohibited.

350000

550000

550000

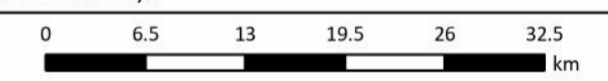
1:125,000



- 2023 Campaign BH
- + 2023 Campaign TP
- + 2024 Campaign TP
- 2024 Campaign BH
- Archaeological Boreholes 2024
- Cable Boundary

Notes:

Onshore Coordinate System
 Datum: OSGB 1936
 Spheroid: Airy 1830
 Projection: British National Grid
 Central Meridian: 2 W
 Vertical Reference: Newlyn



20.10 Clarification Note:
 2023/24 Borehole Locations Plan

Drawing No: PP1-ODOW-DEV-CS-NOT-0100 Page Size: A2

Rev No:	Date	Description	Drawn	Checked	Approved
1.0	Dec 2024	FOR REFERENCE PURPOSES ONLY	SA		



This document may only be used for the purpose for which it was commissioned and in accordance with the terms of engagement for that commission. Unauthorised use of this document in any form whatsoever is prohibited.